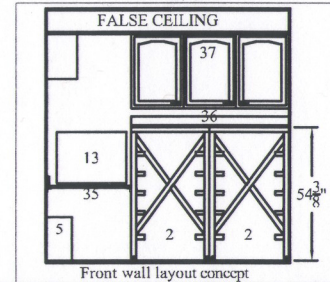


- | | | |
|--------------------------------------|---|--|
| 1) Forte Gantry | 16) Gurney Lift | 31) Exterior Door to Lockable Leaded Compartment |
| 2) Collimator Single Tower Exchanger | 17) Curtain | 32) 35' Shorepower Cord |
| 3) Dual Heads | 18) Powered Expandable Side | 33) - |
| 4) Patient Table | 19) Shorepower Cord Storage | 34) - |
| 5) UPS | 20) Generator Compartment | 35) Counter Top |
| 6) Wall Mounted EKG | 21) Power Panel | 36) Counter Top |
| 7) Collimator Exchange | 22) Genset Trans. Switch in Ext. Comp. | 37) Overhead Deep Cabinets |
| 8) Acquisition Terminal | 23) Genset Gauges & Remote Start | |
| 9) Process Terminal | 24) AM/FM Radio | |
| 10) Keyboard & Chair | 25) Overhead Cabinets | |
| 11) Dose Calibrator | 26) Overhead Cabinets | |
| 12) L-Block | 27) Slide Out Platform Stair System with Integral Hand Rail | |
| 13) Printer | 28) Work Surface | |
| 14) Personnel Door | 29) Work Surface | |
| 15) Gurney Door | | |



Front wall layout concept