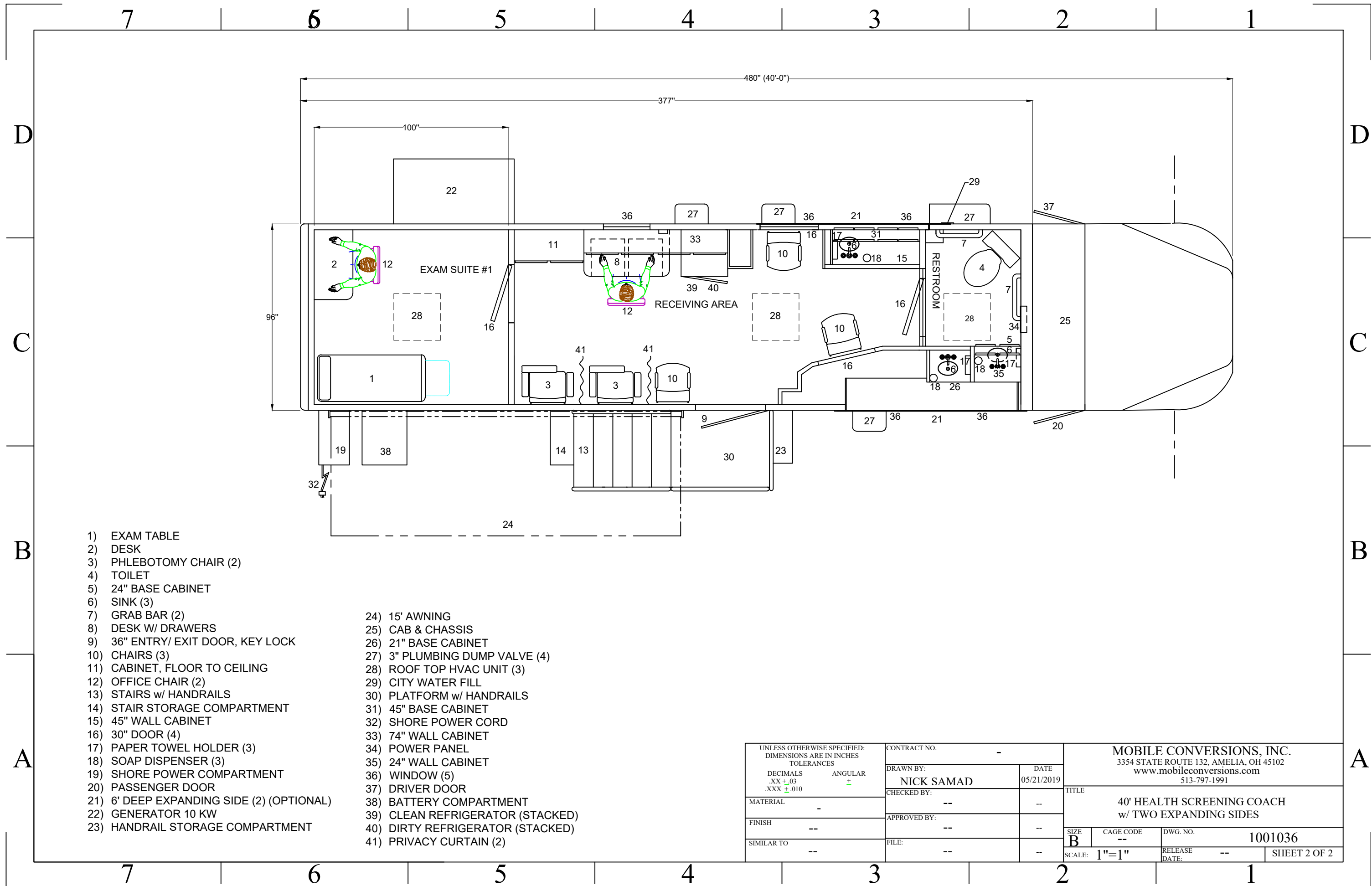


- 1) EXAM TABLE
- 2) DESK
- 3) PHLEBOTOMY CHAIR (2)
- 4) TOILET
- 5) 24" BASE CABINET
- 6) SINK (2)
- 7) GRAB BAR (2)
- 8) DESK W/ DRAWERS
- 9) 36" ENTRY/ EXIT DOOR, KEY LOCK
- 10) CHAIRS (1)
- 11) CABINET, FLOOR TO CEILING
- 12) OFFICE CHAIR (2)
- 13) STAIRS w/ HANDRAILS
- 14) STAIR STORAGE COMPARTMENT
- 15) 45" WALL CABINET
- 16) 30" DOOR (4)
- 17) PAPER TOWEL HOLDER (3)
- 18) SOAP DISPENSER (3)
- 19) SHORE POWER COMPARTMENT
- 20) PASSENGER DOOR
- 21) 6' DEEP EXPANDING SIDE (2) (OPTIONAL)
- 22) GENERATOR 10 KW
- 23) HANDRAIL STORAGE COMPARTMENT
- 24) 15' AWNING
- 25) CAB & CHASSIS
- 26) 21" BASE CABINET
- 27) 3" PLUMBING DUMP VALVE (4)
- 28) ROOF TOP HVAC UNIT (3)
- 29) CITY WATER FILL
- 30) PLATFORM w/ HANDRAILS
- 31) 45" BASE CABINET
- 32) SHORE POWER CORD
- 33) 74" WALL CABINET
- 34) POWER PANEL
- 35) 24" WALL CABINET
- 36) WINDOW (5)
- 37) DRIVER DOOR
- 38) BATTERY COMPARTMENT
- 39) CLEAN REFRIGERATOR (STACKED)
- 40) DIRTY REFRIGERATOR (STACKED)
- 41) PRIVACY CURTAIN (2)

| | | | | | |
|---|--------------|--------------------------------|--------------------|--|------------------|
| UNLESS OTHERWISE SPECIFIED: DIMENSIONS ARE IN INCHES TOLERANCES | | CONTRACT NO. - | | MOBILE CONVERSIONS, INC. 3354 STATE ROUTE 132, AMELIA, OH 45102 www.mobileconversions.com 513-797-1991 | |
| DECIMALS .XX +.03 .XXX ±.010 | ANGULAR ± | DRAWN BY: NICK SAMAD | DATE 05/21/2019 | | |
| MATERIAL - | | CHECKED BY: -- | | 40' HEALTH SCREENING COACH w/ TWO EXPANDING SIDES | |
| FINISH -- | | APPROVED BY: -- | | | |
| SIMILAR TO -- | | FILE: -- | | TITLE SIZE B | CAGE CODE -- |
| | | | | DWG. NO. 1001036 | SHEET 1 OF 2 |
| | | | | SCALE: 1"=1" | RELEASE DATE: -- |



- 1) EXAM TABLE
- 2) DESK
- 3) PHLEBOTOMY CHAIR (2)
- 4) TOILET
- 5) 24" BASE CABINET
- 6) SINK (3)
- 7) GRAB BAR (2)
- 8) DESK W/ DRAWERS
- 9) 36" ENTRY/ EXIT DOOR, KEY LOCK
- 10) CHAIRS (3)
- 11) CABINET, FLOOR TO CEILING
- 12) OFFICE CHAIR (2)
- 13) STAIRS w/ HANDRAILS
- 14) STAIR STORAGE COMPARTMENT
- 15) 45" WALL CABINET
- 16) 30" DOOR (4)
- 17) PAPER TOWEL HOLDER (3)
- 18) SOAP DISPENSER (3)
- 19) SHORE POWER COMPARTMENT
- 20) PASSENGER DOOR
- 21) 6' DEEP EXPANDING SIDE (2) (OPTIONAL)
- 22) GENERATOR 10 KW
- 23) HANDRAIL STORAGE COMPARTMENT
- 24) 15' AWNING
- 25) CAB & CHASSIS
- 26) 21" BASE CABINET
- 27) 3" PLUMBING DUMP VALVE (4)
- 28) ROOF TOP HVAC UNIT (3)
- 29) CITY WATER FILL
- 30) PLATFORM w/ HANDRAILS
- 31) 45" BASE CABINET
- 32) SHORE POWER CORD
- 33) 74" WALL CABINET
- 34) POWER PANEL
- 35) 24" WALL CABINET
- 36) WINDOW (5)
- 37) DRIVER DOOR
- 38) BATTERY COMPARTMENT
- 39) CLEAN REFRIGERATOR (STACKED)
- 40) DIRTY REFRIGERATOR (STACKED)
- 41) PRIVACY CURTAIN (2)

| | | | | | |
|---|--------------|--------------------------------|--------------------|--|--------------------|
| UNLESS OTHERWISE SPECIFIED: DIMENSIONS ARE IN INCHES TOLERANCES | | CONTRACT NO. - | | MOBILE CONVERSIONS, INC. 3354 STATE ROUTE 132, AMELIA, OH 45102 www.mobileconversions.com 513-797-1991 | |
| DECIMALS .XX +.03 .XXX ±.010 | ANGULAR ± | DRAWN BY: NICK SAMAD | DATE 05/21/2019 | | |
| MATERIAL | - | CHECKED BY: | -- | 40' HEALTH SCREENING COACH w/ TWO EXPANDING SIDES | |
| FINISH | -- | APPROVED BY: | -- | | |
| SIMILAR TO | -- | FILE: | -- | SIZE B | CAGE CODE -- |
| | | | | DWG. NO. 1001036 | RELEASE DATE -- |
| | | | | SCALE: 1"=1" | SHEET 2 OF 2 |