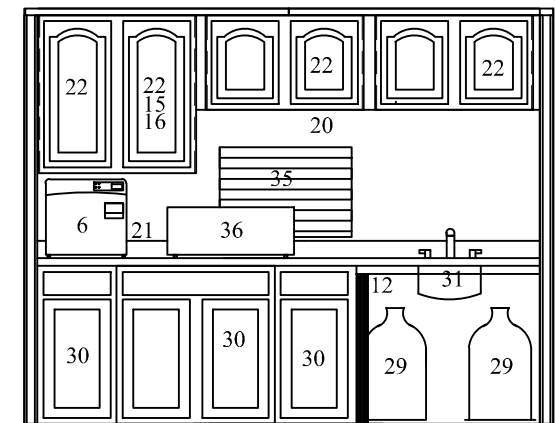


- |                            |                             |                              |
|----------------------------|-----------------------------|------------------------------|
| 1) DENTAL CHAIR            | 15) POWER PANEL             | 29) (2) 5 GALLON WATER TANKS |
| 2) PORTABLE LIGHT          | 16) TRANSFER SWITCH         | 30) BASE CABINETS            |
| 3) DELIVERY SYSTEM         | 17) ELECTRICAL COMPARTMENT  | 31) SINK                     |
| 4) DENTAL COMPRESSOR       | 18) GENERATOR COMPARTMENT   | 32) ASST CHAIR               |
| 5) SUCTION UNIT            | 19) SHORE CABLE             | 33) SIDE CHAIR               |
| 6) STERILIZER              | 20) RADIO                   | 34) OFFICE CHAIR             |
| 7) DOOR, ENTRY W/ WINDOW   | 21) WORK SURFACE            | 35) WALL MOUNTED X-RAY       |
| 8) DOOR, WHEELCHAIR        | 22) OVERHEAD CABINETS       | 36) ULTRASONIC CLEANER       |
| 9) POWER STAIR SYSTEM      | 23) 2 1/2 TON/8KW HVAC UNIT |                              |
| 10) LIGHT, EXTERIOR (2)    | 24) HYDRAULIC COMPARTMENT   |                              |
| 11) WHEEL CHAIR LIFT       | 25) CAB                     |                              |
| 12) CURTAIN                | 26) WASTE WATER TANK        |                              |
| 13) BATTERY, CHASSIS       | 27) WORK SURFACE            |                              |
| 14) GEN. REMOTE START/STOP | 28) DR. CHAIR               |                              |



VIEW A=A

UNLESS OTHERWISE SPECIFIED: DIMENSIONS ARE IN INCHES TOLERANCES		CONTRACT NO. SP-19			
DECIMALS XX ± .03 XXX ± .010	ANGULAR ±	DRAWN BY:	DATE	TITLE	
MATERIAL		CHECKED BY: --	--	MOBILE ONE OPERATION DENTAL COACH	
FINISH		APPROVED BY: --	--	SIZE	DWG. NO.
SIMILAR TO		FILE: --	--	B	1000806A
		SCALE: 3/8"=1'	RELEASE DATE: --	SHEET 1 OF 1	