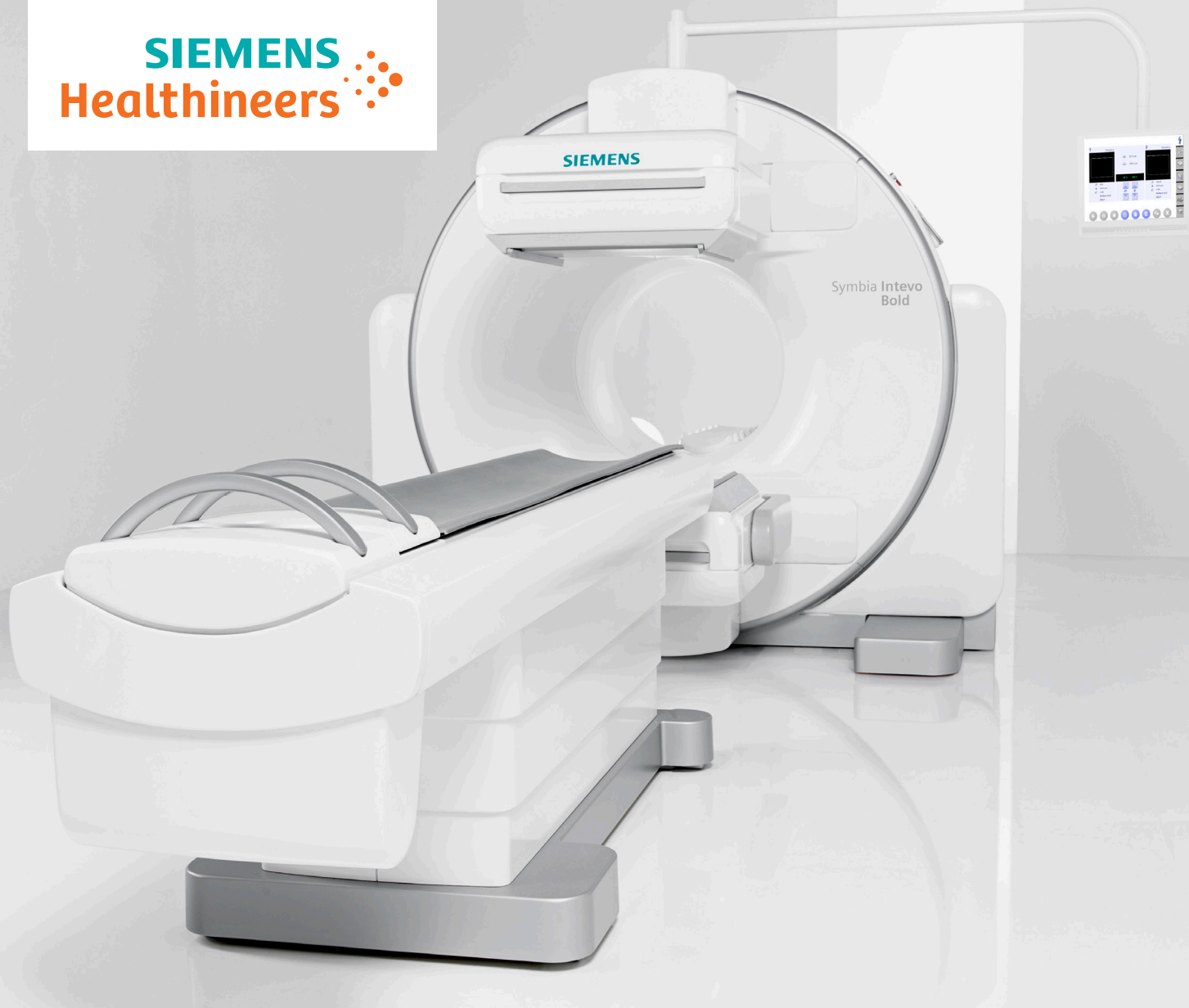


SIEMENS
Healthineers



siemens.com/mi

Symbia Intevo Bold

More CT for your SPECT/CT.

A better image, for every body¹

For quick and conclusive answers to clinical questions, you need the best image for each patient. This often means achieving a careful balance between image quality and radiation dose. But with a more diverse patient population and a growing concern over radiation risk, striking this balance can be a challenge.

To help you accomplish this, we combined high-performance CT with our proven SPECT technologies. Look no further than Symbia Intevo Bold.^{TM2}



Building on the core and optional technologies available across our SPECT/CT portfolio, Symbia Intevo Bold offers you even more CT choices to enhance your capabilities, including:

Sinogram Affirmed Iterative Reconstruction (SAFIRE)³

Reduce radiation dose while maintaining image quality.

Interleaved Volume Reconstruction (IVR) (32-Slice)

Reconstruct up to 32 slices to evaluate small structures.

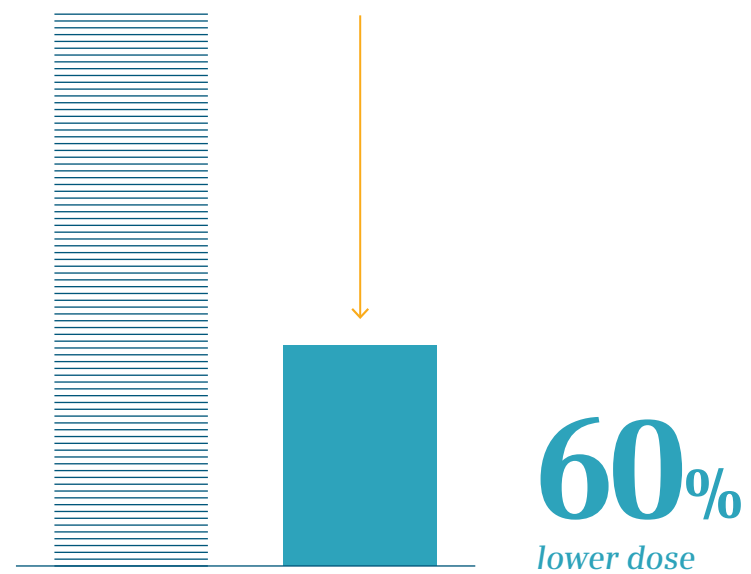
Iterative Metal Artifact Reduction (iMAR)⁴

See more detail by reducing metal artifacts.

Dual Energy Scan

Improve image quality with two sequential spiral scans at different energies.

SAFIRE reduces dose without compromising on image quality.



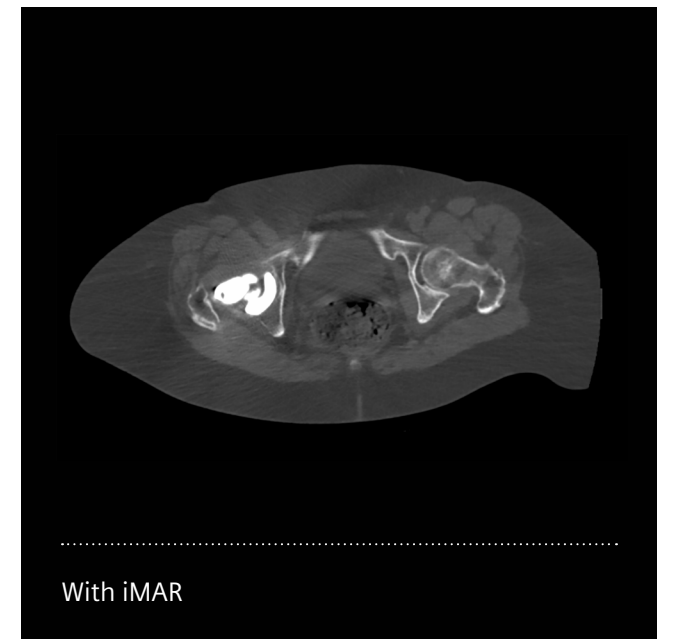
By enabling up to 60% lower radiation dose³, SAFIRE helps you consistently provide a higher level of patient-centric care.



iMAR⁴ lets you overcome the effects of metal artifacts in challenging exams.

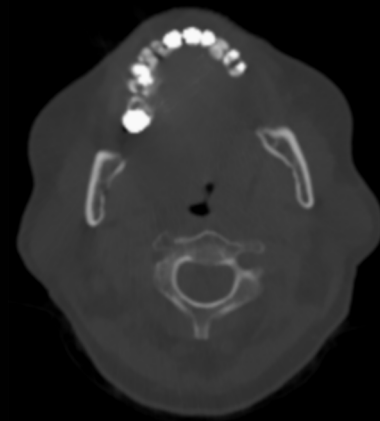


Get more clinical value from your CT and attenuation-corrected SPECT images by using iMAR to reduce metal-related artifacts from orthopedic and dental implants.



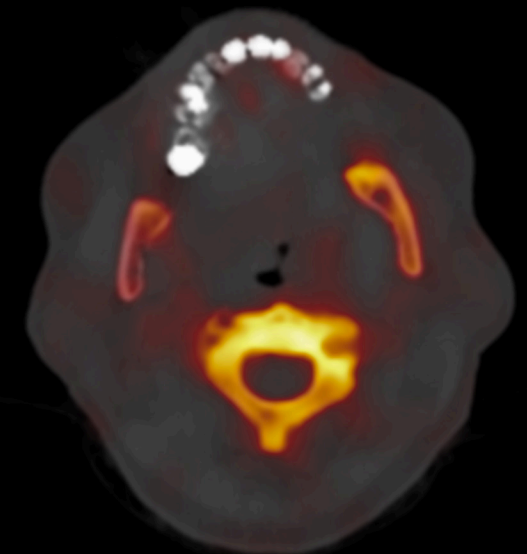
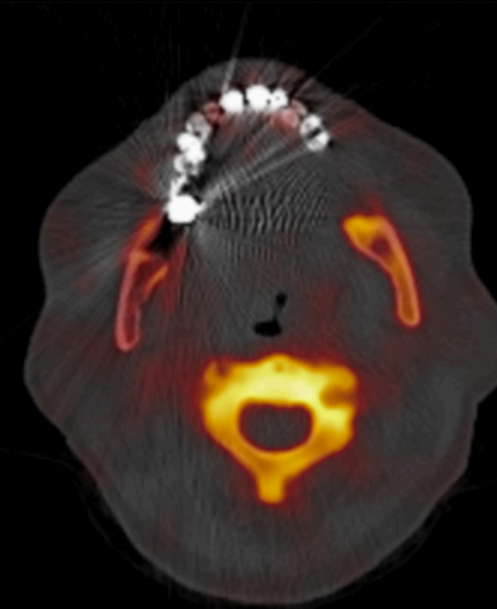
iMAR reduces metal artifacts caused by orthopedic implants.
Data courtesy of Universität Würzburg, Würzburg, Germany.

See more detail in your SPECT and CT images by reducing metal artifacts with iMAR.



Without iMAR


With iMAR



Without iMAR

With iMAR

Data courtesy of Universität Würzburg, Würzburg, Germany.



For those who want
more from SPECT/CT:
Symbia Intevo Bold. We
made high-performance
CT even better.

Siemens Healthcare Headquarters

Siemens Healthcare GmbH
Henkestr. 127
91052 Erlangen
Germany
Phone: +49 9131 84-0
siemens.com/healthcare

Global Business Line

Siemens Medical Solutions USA, Inc.
Molecular Imaging
2501 North Barrington Road
Hoffman Estates, IL 60192
USA
Phone: +1 847 304-7700
siemens.com/mi

Disclaimers

¹ For patients up to 227kg (500lb).

² Symbia Intevo Bold is not yet commercially available in all countries. Due to regulatory reasons, its future availability cannot be guaranteed. Please contact your local Siemens organization for further details.

³ SAFIRE is optional on Symbia Intevo Bold. In clinical practice, the use of SAFIRE may reduce CT patient dose depending on the clinical task, patient size, anatomical location, and clinical practice. A consultation with a radiologist and a physicist should be made to determine the appropriate dose to obtain diagnostic image quality for the particular clinical task. Data on file.

⁴ iMAR is optional on Symbia Intevo Bold. The amount of metal artifact reduction and corresponding improvement in image quality depends on a number of factors including: composition and size of the metal object, patient size, anatomical location and clinical practice. It is recommended to perform reconstructions with iMAR enabled in addition to conventional reconstruction without iMAR.

Order No. A91MI-10440-1C-7600 | Printed in USA | MI-3125.TM.VSA.TW.1500
© Siemens Healthcare GmbH, 02.2017

Trademarks and service marks used in this material are property of Siemens Healthcare GmbH. All other company, brand, product and service names may be trademarks or registered trademarks of their respective holders.

All comparative claims derived from competitive data at the time of printing. Data on file. Siemens reserves the right to modify the design and specifications contained herein without prior notice. As is generally true for technical specifications, the data contained herein varies within defined tolerances. Some configurations are optional. Product performance depends on the choice of system configuration.

Please contact your local Siemens organization for the most current information.
Note: Original images always lose a certain amount of detail when reproduced.

All photographs © 2017 Siemens Healthcare GmbH. All rights reserved.

"Siemens Healthineers" is considered a brand name. Its use is not intended to represent the legal entity to which this product is registered. Please contact your local Siemens organization for further details.

siemens.com/mi