

GE Healthcare

Where your nuclear medicine future begins

Brivo NM615



Because **your passion** is our passion.

We're devoted to the future of nuclear medicine, and what better way to show that devotion than to introduce the Brivo[®] NM615 imaging system. Whether you're looking for your first nuclear medicine camera or one to handle overflow from your rising patient volume, this reliable, single-head system has been designed to grow with your clinic at a minimal investment. With the Brivo NM615, it's never been easier to bring the benefits of GE's proven nuclear medicine technology to your patients.

A flexible foundation worth building upon

At its core, the Brivo NM615 is an affordable nuclear medicine solution that can address your needs today, and can protect your initial investment by expanding the ability to serve your patients well into the future. To that end, we've designed this system with the flexibility to perform the most common nuclear medicine procedures and the option to expand your capabilities through simple software enhancements or on-site hardware upgrades whenever you're ready.

With Evolution technology, Auto-Body Contouring software, and Ignite Streamlined Workflow, you can cut acquisition time to rival a dual-head system in many common procedures, but with the affordability of a single-head system.

The Xeleris[®] 3 Essential configuration software can also be upgraded to the broader Xeleris 3 portfolio of advanced applications.

Your upgrade path doesn't end there; Brivo NM615 is completely upgradable to our premium Discovery[®] NM630 and Discovery NM/CT 670 systems. If you want the ability to go grow from a single-head system to a fully featured SPECT/CT system, this is the solution for you.

No other nuclear medicine provider offers a solution with this level of flexibility, with the ease of this upgrade path, and with this total cost of ownership. With the Brivo NM615, you can choose the solution that meets your needs now and know that as your needs evolve, your system can too.



"There's never been a better time for nuclear medicine. With the Brivo NM615, it's easier than ever before to bring the unique capabilities of nuclear medicine into your facilities. We've not only made this system user friendly, but we've transformed the Brivo NM615's upgrade path into an upgrade super highway."

– Brivo NM615 lead engineer

Powerful performance without compromise

Inside the Brivo NM615, you'll find the same level of technology used in our flagship SPECT/CT system, the Discovery NM/CT 670. Have confidence that your investment is state-of-the-art now and ready for the future.

Elite NXT detector

A step forward in detector design, Elite NXT detector offers outstanding SPECT resolution and exceptional contrast for superb image quality, all to help you diagnose disease earlier and more accurately. Image quality is enhanced with SPECT-optimized collimators and ultra-high count rate (460kCounts per second) for extremely precise lesion detection.

Dose management

Exclusive Evolution technology changes the relationship between time, dosage and image quality by allowing you to reduce time or injected patient dose up to 50 percent in many scanning procedures while maintaining excellent image quality.

Increased Productivity

Half-time imaging meets fast, flexible robotic gantry motions, and Ignite streamlined workflow to deliver quality images efficiently.

Just what you need to care for more patients

Because the Brivo NM615 provides advanced nuclear imaging at a price within reach, we've made it easier for you to apply this proven technology to more patients than ever before. The system has also been designed to be accommodating and comfortable for more patients than previous generation GE nuclear medicine systems. And with automated patient setup and positioning we've improved the experience for patients and technologists.

Patient table and gantry

With its slim gantry, large bore and versatile, 500-pound (227 kilogram) capacity table capable of pivoting out of the way for upright, chair or stretcher imaging, the Brivo NM615 is one of the most patient-friendly systems we've built yet.

Automatic body contouring

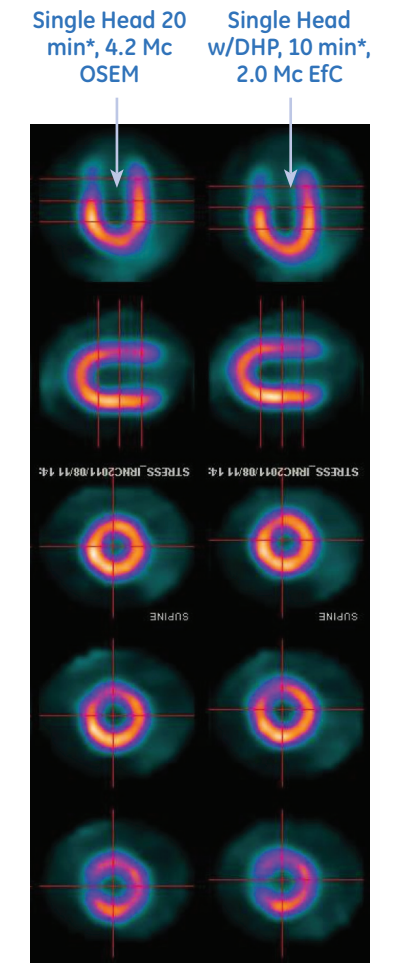
To optimize image clarity and sharpness, real-time, infrared-guided automatic contouring enables consistent detector positioning close to the patient throughout the scan, regardless of body type.

Dual Head Performance Package (DHP)
enables you to cut acquisition time to rival a dual-head system in many common procedures

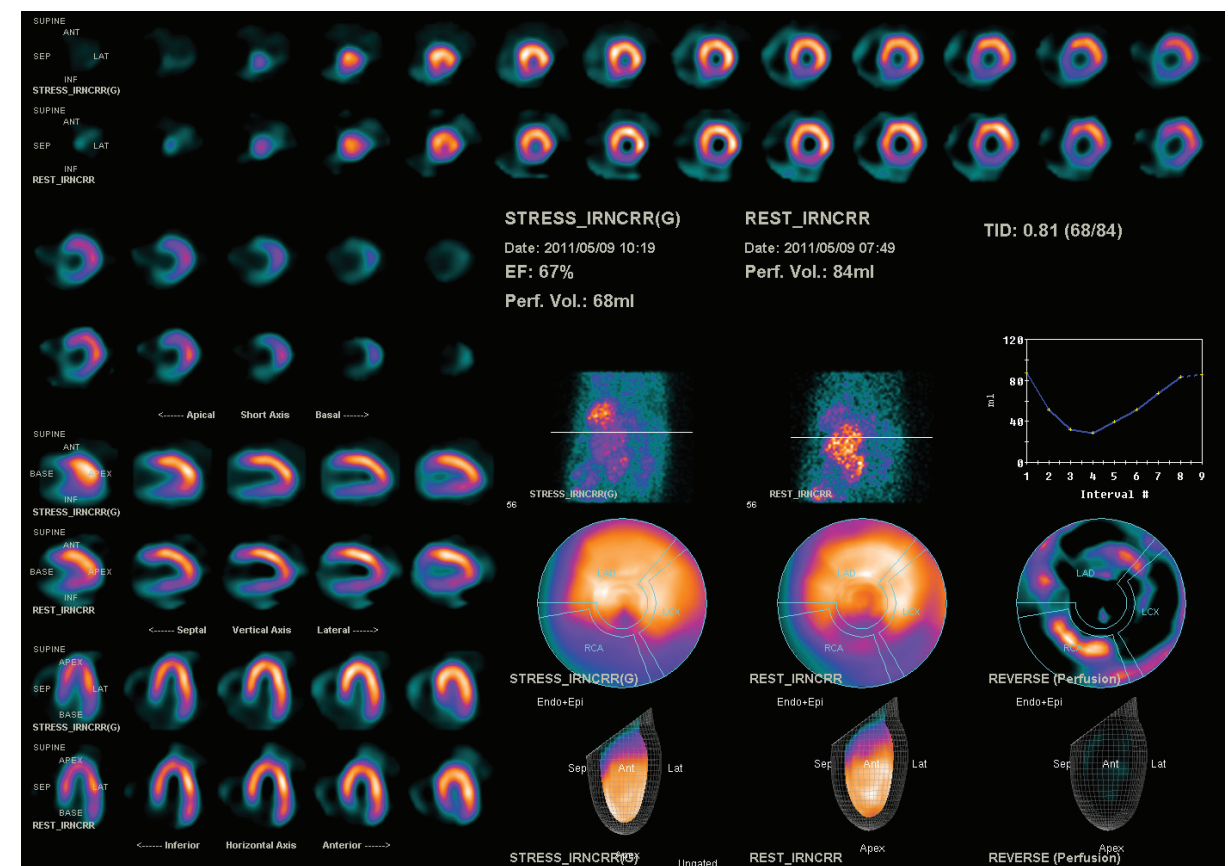


Single Head
30 min*, Ant then Post
Standard

Single Head
15 min*, Ant then Post
With DHP



*Net scan time



Xeleris 3 Workstation Screen

A **simple** and **flexible** portal to all that is possible

Optimized for use with the Brivo NM615, the Xeleris 3 Essential configuration offers an easy and comprehensive data management solution that has the same easy to read widescreen, memory, hardware and network that's been proven around the world.



The Xeleris workstation delivers innovative productivity tools, built-in connectivity, exceptional processing speed and advanced versatility. By giving you complete access to information when and where you need it through PACS as well as remote PCs, it helps you share ideas and potentially make better decisions. And that leads to better care.

Ignite streamlined workflow offers fast, automated, one-keystroke exams for many nuclear medicine studies. Images are automatically ready for rapid review on Xeleris. One click starts the scan, sends the completed study to the Xeleris, launches the appropriate processing application, and places results in the physician's digital inbox.

It's that fast and easy.

Service

Maximize uptime and usability with world-renowned GE service, which includes local service complemented by advanced remote digital support.

Our devotion to your nuclear medicine future is clear

- Big technology at a small price
- Productivity that rivals dual-head systems
- Full on-site upgrade path to premium SPECT/CT
- Support and reliability when you need it most

"We are committed to making nuclear medicine easier to use and more accessible to patients through innovative, reliable, high quality, and affordable clinical solutions. The Brivo NM615 is designed to do that." – Brivo NM615 lead designer



©2011 General Electric Company – All rights reserved.

General Electric Company reserves the right to make changes in specifications and features shown herein, or discontinue the product described at any time without notice or obligation.

GE and GE Monogram are trademarks of General Electric Company.

A General Electric company, doing business as GE Healthcare.

* Trademark of General Electric Company

About GE Healthcare:

GE Healthcare provides transformational medical technologies and services that are shaping a new age of patient care. Our broad expertise in medical imaging and information technologies, medical diagnostics, patient monitoring systems, drug discovery, biopharmaceutical manufacturing technologies, performance improvement and performance solutions services help our customers to deliver better care to more people around the world at a lower cost. In addition, we partner with healthcare leaders, striving to leverage the global policy change necessary to implement a successful shift to sustainable healthcare systems.

Our “healthymagination” vision for the future invites the world to join us on our journey as we continuously develop innovations focused on reducing costs, increasing access and improving quality around the world. Headquartered in the United Kingdom, GE Healthcare is a unit of General Electric Company (NYSE: GE). Worldwide, GE Healthcare employees are committed to serving healthcare professionals and their patients in more than 100 countries. For more information about GE Healthcare, visit our website at www.gehealthcare.com.

GE Healthcare
3000 N. Grandview Blvd
Waukesha, WI 53188
U.S.A.



imagination at work